

**YAYASAN SABAH  
ANNUAL REPORTS FOR 2021**



**MALIAU BASIN CONSERVATION AREA**

**CONSERVATION AND ENVIRONMENTAL MANAGEMENT DIVISION  
BIODIVERSITY & PROTECTED AREAS**

## CONTENTS

---

### Executive Summary

1. Introduction
2. History
3. Establishment
4. Objective of the protected area
5. Administration
6. Conservation & Research
7. Hospitality & Recreation
8. Collaboration/ Funding
9. Achievement
10. The way forward
11. Highlights Activities in 2021
12. Highlights Activities in 2021 in Pictures

### REFERENCES

### APPENDIX

# MALIAU BASIN CONSERVATION AREA

## EXECUTIVE SUMMARY

---

Maliau Basin Conservation Area (MBCA) covers an area of around 58,840 ha out of the 173, 015 ha in accordance to *Forest (Maliau Basin Conservation Area) Rules* and located at Tongod district. MBCA is managed by Yayasan Sabah (YS) on behalf of the Maliau Basin Management Committee (MBMC). Conservation & Environmental Management Division (CEMD) of YS is the division that has been assigned to manage MBCA as well as the Secretary of Maliau Basin Management Committee (MBMC).

Maliau Basin Studies Centre (MBSC) was officially opened in 2011 and has been utilised as research hub, training, environmental education and nature tourism. As of 2019, 359 research projects related to Maliau has been completed or in progress and comprises of post-doctoral (63), PhD. (89), Masters (105), Bachelors (31) and other (71). The research covers various subjects such as flora, fauna, climate, hydrology, geomorphology and community.

The environmental education program (EEP) in Maliau has been organised either by the Sabah Nature Club or by MBCA. As of 2019, 35 EEP has been organised with 17 programs under SNC and 18 by MBCA. In total, 788 participants from various schools have participated in these programs.

To date, the total number of visitors to Maliau since 1998 is 40,588 including EEP participants and researchers. Among the notable visitors to Maliau are HRH Prince Henrik of Denmark, the former Chief Minister of Sabah (Tan Sri Musa Haji Aman), the sixth Prime Minister of Malaysia (Datuk Seri Najib Tun Razak) and the fifth Prime Minister of Malaysia (Tun Abdullah Ahmad Badawi)

In order to strengthen the protection of the conservation area, Danum Valley - Maliau Basin – Imbak Canyon (DaMal) Initiative has been established. It is a collaborative effort between Yayasan Sabah, Sabah Wildlife Department and Sabah Environmental Trust (SET). Under this initiative, the patrolling and monitoring activities are supported by providing real-time camera traps, ranger's training and transportation such 4WD vehicle, ATV and boats.

# 1. INTRODUCTION

---

Maliau Basin derived its name from the Murut word *Maliau* for murky or milky, a direct reference to the Maliau River while having other definition of the same word (*oliou*) for bowl or basin. The basin is also called “Land of the Giant Staircases” by the Murut people, believed to be derived from the basin’s land formation for being step-like and also its many waterfalls.

MBCA also known as Sabah's Lost World, is a Class I (Protection) Forest Reserve and one of Malaysia's most exceptional wilderness areas with outstanding natural features such as the majestic seven-tiered Maliau Falls, breath-taking Takob-Akob Falls, Giluk Falls and many other spectacular waterfalls seamlessly warrants such an accolade.

MBCA is also a forest that has never been disturbed and looks like a large crater bounded by a formidable slope that reaches a height of more than 1,700 meters above sea level.

Located in central Sabah (Tongod district), one of two east Malaysian states in the island of Borneo, MBCA is accessible from Tawau or Kota Kinabalu and takes about 4-to-5-hour drive. Accessibility to MBCA is either by road from Kota Kinabalu via Keningau or from Tawau via Kalabakan. It is about 200 km from Tawau, and 175 km from Keningau.

## 2. HISTORY

---

Table 1: Milestone of MBCA

Year	History
1947	First discovered by a pilot;
1970	Maliau Basin as part of Gunung Rara Class II (Commercial Forest) was incorporated into YS Concession Area;
1972	Forestry Department team reached Lake Linumunsut at the foothill of Mt. Lotung;
1981	Designated as Conservation Area;
1988	First major scientific expedition to the Basin by YS Group (YS) and WWF-Malaysia;
1993	Camel Trophy Camp (currently known as Nepenthes Research Station) completed;
1996	Second major scientific expedition by Universiti Malaysia Sabah (UMS) and YS;
1997	Gazetted as Class I (Protection) Forest Reserve;
	Field Management established.
	Communications with the Danish government.
	IKEA funding acquired. (Equipment, vehicles)
1998	Gazettement of the Forest (Maliau Basin Conservation Area) Rules 1998, establishing the Maliau Basin Management Committee (MBMC);
1999	Work started by YS and DANCED on a 4-year project "Maliau Basin Conservation Area, Sabah";
	Gazetted as cultural heritage site under the Cultural Heritage (Conservation) Enactment, 1997;
2001	Major expedition to Lake Linumunsut;
	Ground breaking ceremony for the Maliau Basin Studies Centre on 17th March by HRH the Prince Consort of Denmark, Prince Henrik-Marie Jean Andre (aka Prince Henrik)
2003	Completion of YS-DANCED project;
	Right Honourable Prime Minister mentioned on efforts to nominate MBCA as a World Heritage Site during the motion to table the Mid-term Review of the Eight Malaysia Plan (8MP) on 30th October.
2005	Scientific Expedition by UMS, JICA and YSG to area around Ginseng Camp, Lobah Camp, Camel Trophy Camp, Maliau Falls and Agathis Camp.
2006	Third major scientific expedition to Eucalyptus Camp (15-24 June 2006), jointly organised by the Academy of Sciences Malaysia (ASM) and YS.
2007	Right Honourable Chief Minister of Sabah officially opened the Shell's Maliau Basin Reception & Information Centre on 24th April.
	It was announced that the state government is making effort to make MBCA a World Heritage Site.
2011	Official launching of Maliau Basin Studies Centre by the Right Honourable Prime Minister of Malaysia on 29th January.
	In addition, it was also announced that the Malaysian government seek the recognition from UNESCO for MBCA to be listed as a World Heritage Site.
2012	Protection of additional area adjacent to MBCA, totalling 46,603 ha, reclassifying of Class II (Commercial Forest) to Class I (Protection Forest) adjacent to MBCA;
	Official agreement between YS and NEPCon to prepare a revision on the management plan of MBCA, was sealed in December.
	Aage V. Jansen Foundation fund acquired. for the revision of Management Plan.
2013	First major Wildlife & Resources Survey to assess the wildlife resources in the core area and buffer zones (10th June-24th June 2013) funded by IKEA organised in collaboration with Sabah Wildlife Department
2014	The launching of Maliau Basin Management Plan 2014-2023.
2015	YS & MBCA Management Committee signed MoU with Nordic Rainforest Research Network (NRRN). Jointly endeavour to promote high quality scientific project specifically in MBCA but also in other areas that the party deem relevant.

	YS & Forests of the World (FOTW) collaboration. Jointly endeavour to promote high quality volunteer project specifically in YS Forest Management Area particularly but not restricted to MBCA.
	Maliau Basin Researcher's House & Studio officially opened by Mr. Anders Hildeman, Chairman, Sow-A-Seed Foundation. Both houses constructed with funding from IKEA's, Sow-A-seed Foundation.
2016	Construction of asphalt road from Maliau Gate to Agathis Research Station and the Maliau Basin Studies Centre.
2017	MoU with State Government & Sabah Environmental Trust (SET) on Patrolling (Enforcement & Monitoring) Initiative, Danum Valley, Maliau Basin & Imbak Canyon
	Maliau Basin Conservation Area Porter & Guide Association officially registered under the Department of Registration of Societies Malaysia.
2018	Ground breaking ceremony of Agathis Research Station by YS Director, Datuk Jamalul Kiram Datuk Mohd Zakaria (December) & Chairman of Sow A Seed Foundation, Mr. Ulf Johanson.
2019	Completed construction of the Maliau Basin asphalt road.
2021	MoU between Sabah Environmental Trust and YS, 'Survey on Globally Threatened Species in Damai Rainforest Complex, Borneo'

### 3. ESTABLISHMENT

---

In 1981, YS voluntarily designated Maliau Basin as a conservation area for the purposes of research, education and training and the State Cabinet approved the conservation area status for Maliau in 1984, and following that in 1997 the State Legislative Assembly gazetted the whole area as a Class I (Protection) Forest Reserve and increasing the total area size to 58,840 ha to include the outer slopes and Lake Linumunsut, and excising it from the YS timber concession area.

In 1998, with the gazettment of the *Forest (Maliau Basin Conservation Area) Rules 1998*, it officially established the Maliau Basin Management Committee (MBMC), whose main role is to supervise the protection and development of the area, with YS appointed as the day-to-day manager of the conservation area.

In 2012, an area of 46,603 ha was reclassified to Class I (Protection) Forest Reserve for the purpose of water catchment protection as well as its high conservation value. In year 2014, an area of 5,181 ha was reclassified to Class I FR then later in 2016, another area of 13,810 ha was reclassified to Class I FR.

MBCA is managed by YS on behalf of the Maliau Basin Management Committee (MBMC). It is one of the rare areas where many agencies, both state and national, are involved in steering its direction. Today, there are over 16 organizations in the Maliau Basin Management Committee (MBMC), representing a broad spectrum of Malaysian Society. The role of the Management Committee shall be to plan, co-ordinate, facilitate, monitor and evaluate the management objectives for the MBCA.

The principal members of the Committee are Sabah Forestry Department (SFD), YS, Ministry of Tourism, Culture and Environment, Sabah (MTCE) and Universiti Malaysia Sabah (UMS). The Chairmanship of MBMC is rotated among the principal members.

Other members are Sabah Wildlife Department (SWD), Sabah Parks, Sabah Museum, Sabah Biodiversity Centre, Academy of Sciences Malaysia, National University of Malaysia (UKM), Forest Research Institute of Malaysia (FRIM), University Putra Malaysia (UPM), University Malaysia Sarawak (UNIMAS), the State Department of Conservation Environment, Sapulut Forest Development Corporation Sdn. Bhd., World Wide Fund for Nature (WWF) Malaysia, the district offices of Tongod, Nabawan and Keningau as well as the Tawau City Council.

The Secretary of the Committee is the Conservation & Environmental Management Division (CEMD) of YS. The day-to-day management of MBCA also carried out by CEMD of YS which in consultation with the Management Committee.

Table 2: The area of the MBCA in accordance to the  
*Forest (Maliau Basin Conservation Area) Rules*

Year	Acreage	Status	Remarks	Area
31 Januari 2015	58,840.0	Maliau Basin Forest Reserve	Cited as Forest (Maliau Basin Conservation Area) (Amendment) Rules 2016 under the Forest Enactment 1968	Maliau Basin Forest Reserve (F.D. Plan No. 88/5A)
	46,603.0	Maliau Buffer Zone Forest Reserve		Maliau Buffer Zone Forest Reserve (F.D. Plan No. 102/94)
	10,364.0	Gunung Rara Wildlife Corridor Forest Reserve		Gunung Rara Wildlife Corridor Forest Reserve (F.D. Map No. 89/71)
	5,181.0	Maliau Buffer Zone Forest Reserve (Extension)	Forests (Constitution of Forest Reserves and Amendment) Enactment 1984 (No. 4 of 1984)	Maliau Buffer Zone Forest Reserve (Extension) (F.D. Map No. 102/103)
	3,265.0	Tambulanan Forest Reserve		Tambulanan Forest Reserve (F.D. Map No. 103/92)
	3,857.0	Sungai Anjeranjermut Forest Reserve		Sungai Anjeranjermut Forest Reserve (F.D. Map No. 103/98)
	4,215.0	Sungai Sumagas Forest Reserve		Sungai Sumagas Forest Reserve (F.D. Map No. 104/144)
	19,870.0	Sungai Tiagau Forest Reserve		Sungai Tiagau Forest Reserve (F.D. Map No. 103/93)
	7,010.0	Sungai Tiagau Forest Reserve (Extension)		Sungai Tiagau Forest Reserve (Extension) (F.D. Map No. 104/143)
	13,810	Maliau Buffer Zone (Extension II)		Maliau Buffer Zone (Ext. II) (F.D. Map No. 103/100)
Total:		173,015		



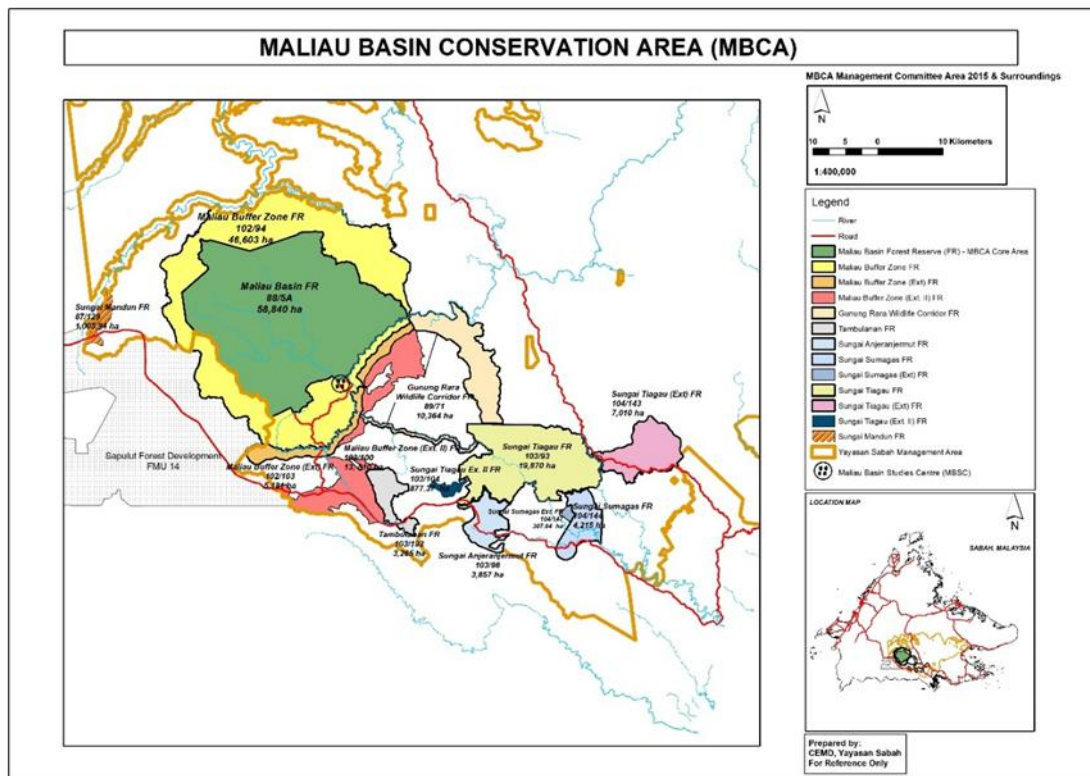


Figure 1: Map showing the area accordance to the *Forest (Maliau Basin Conservation Area) Rules*.

## 4. OBJECTIVE OF THE PROTECTED AREA

---

In accordance to the *Forest (Maliu Basin Conservation Area) Rules 1998* the management objectives of establishing MBCA are:

- a. The protection in perpetuity of as much as possible of the biological diversity expressed at genetic, individual, sub-species, habitat and ecosystem levels of organisation;
- b. The promotion of research into all aspects of the composition and functioning of the Reserve's ecosystem including comparative studies of disturbance and recovery processes following logging of nearby areas;
- c. The promotion of education and training in conservation, natural history, ecology, forestry and related sciences;
- d. The promotion of the Reserve for appropriate recreation and nature tourism, provided such activities do not significantly compromise the management objectives stated above; and
- e. The integration of the objectives of the other planned development in surrounding areas to the objectives of the Reserve so as to create a model forest management area that combines conservation, forestry and nature tourism activities on a sustainable long- term basis.

### **Vision**

To be renown Centre of Excellence for protected area management.

### **Mission**

Effective and vital action taken to ensure that by 2023, MBCA is recognised as a Centre of Excellence for protected area management; and ensuring that the flora and fauna assemblages contained in MBCA are protected, valued, and managed in perpetuity for the purposes of conservation, education, research and recreation.

## 5. ADMINISTRATION

### 5.1 HUMAN RESOURCES

MBCA field management was established in year 1997 which include an officer and rangers. To date, MBCA is made up of 52 staff consist of 26 permanent and 26 daily paid workers (DPW). Details of the staff attachment by Unit is as in Appendix 1.0.

### 5.2 STAFF MOVEMENT AND CAPACITY BUILDING

Below is the events/training attended by DVCA staff for the year 2021:

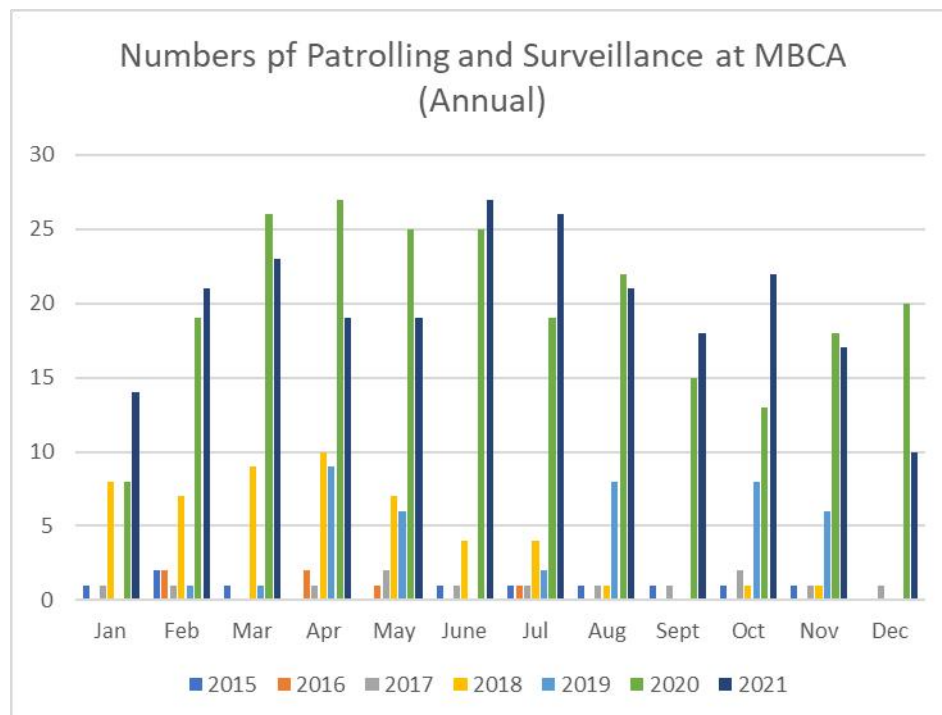
No	Date	Particular	Venue	Name of Staff Involved
1	10 <sup>th</sup> – 13 <sup>th</sup> Nov 2021	Ali Albanah Anchun Bil Maaruf Mohamad David Paul Fhines Isten Jeipin Gilbert Kamino Grace Pounsion Hardy Mangkawasa Jarizul Mohd Marmoh Jeffrey Layongan Jeffry Battin Masliadi Asri Mius Nambalek Mohd Azree Upili Mohd Izzul Hafiz Jainurin Mohd Rafi Bunggau Olivy Anne James K. Rizuan Ampasok Sufizah Jinius	MBSC	“Hospitality and nature guiding skills training for rangers, guides and porters”
2	22 <sup>nd</sup> – 26 <sup>th</sup> Nov 2021	Grace Pounsion Ali Albanah Anchun Masliadi Asri Jeffry Battin	DVCA	Train the trainers course (Environmental Education Program)
3	6 <sup>th</sup> – 10 <sup>th</sup> Dec 2021	Zuliati Tayat David Paul Jeffrey Layongan Mius Bin Nambalek Mohd Azree Bin Upili Rizuan Bin Ampasok Grace Pounsion Thomas Roling Hardy Bin Mangkawasa Jeffry Battin Masliadi Asri Mohd Suhairryansah Reynold Stephanie Gunsalam Dimok Fhines Isten Jeipin Julian Paul Ahmad Shahirudin Lius Mohd Fardee Bin Simin Sajirus Bin Rimin Rohid Kaloh	KKLM	Refresher Course on Wilderness Emergency First Responder For C&EMD Staff.
4	8 <sup>th</sup> – 10 <sup>th</sup> Dec 2021	Jarizul Mohd Marmoh	CEMD HQ, Kota Kinabalu	Tourism SWOT Analysis Workshop

## 6. CONSERVATION & RESEARCH

### 6.1 CONSERVATION

Most of the conservation activities in MBCA are focused on patrolling and monitoring the boundaries accessible either by vehicle, on-foot or by boat. Every year, at least 56 patrolling activities have to be completed to safeguard the MBCA.

Under the DaMal collaborative program with SET, the annual patrolling and monitoring activities have increased to from less than 15 (from 2015 – 2017) to more than 40 (2018 – 2019) and 230 (2020 – 2021).



\*The DaMal Patrolling Initiative started at December 2017)

## 6.2 RESEARCH

MBCA was officially started in 1997. Since then, until 2019, 359 research projects related to Maliau has been completed or in progress and comprises of post-doctoral (63), PhD. (89), Masters (105), Bachelors (31) and other (71).

Table 4: Number of researchers at MBCA

Level of study	Completed	Ongoing	Yet to commence	Total
Post-doc	27	28	8	63
PhD	36	32	21	89
MSc	53	16	36	105
BSc	15	2	14	31
Others	25	29	17	71
<b>Total</b>	<b>156</b>	<b>107</b>	<b>96</b>	<b>359</b>

Table 3: Chronology of research activities at MBCA

No	Year	Activities	Remarks
1	1988	Expedition to Maliau Basin, Sabah. The objectives are: <ul style="list-style-type: none"> <li>i. To document as much as possible on the geology, soils, hydrology, botany and zoology of the MBCA so as to assess its scientific and conservation values</li> <li>ii. To obtain background information for may future mangement decisions on the use of the area. Options ionclude mineral exploitaipon, timber extraction and conservation.</li> <li>iii. To inform the public at large of the wonders of the area through the media of newspaper articles, scientific papers dan documentary films.</li> </ul>	<p>450 species of plants collected by botanist. Notable discoveries were made of two flowers of the newly described <i>Rafflesia tenghku-adlinii</i>.</p> <p>One outstanding rarity seen in the heath forest was a male Bulwer's Pheasant – apparently the first record for Sabah in several years.</p> <p>Rarities sighted include prosboscis monkeys (at 650m elevation and 600Km from the sea by river).</p> <p>A notable feature of the mammal fauna is a large migrating population of bearded pig.</p> <p>The presence of coal within the basin was explored further by the geological team at 24 localities in the north-eastern.</p>
2	1993	Camel Trophy Camp (currently known as Nepenthes Research Station) completed.	The pace of research and conservation activities increase. Basic facility for research inside the basin.
3	1996	Second major scientific expedition by Universiti Malaysia Sabah (UMS) and YS held from 13-23 May 1996;  The primary objectives of the expedition were similar to those of 1988, but in more depth.	<p>Carrying out a more detailed study of the south-western part of the Basin, making up approximately 10-20% of the total basin area.</p> <p>A new gecarcinucid crab, <i>Thelphusula hulu</i>, new species, is described.</p> <p>The palaemonid prawn <i>Macrobrachium sabanus</i> and the parathelphusid crab <i>Parathelphusa valida</i> are recorded for the first time from such a high altitude (490 m a.s.l.).</p>
4	1998	Gazettement of the Forest (Maliau Basin Conservation Area) Rules 1998, establishing the Maliau Basin Management Committee (MBMC).	<p>To forge relationship with local or overseas organisations for the purpose of research, conservation &amp; education.</p> <p>To assess, accept and reject any proposed</p>

			<p>research to be carried out within the MBCA Management Committee Area.</p> <p>To address appropriately the findings of research in the national interest</p> <p>To advise on guidelines of the role of collaborators.</p>
5	1999	Work started by YS and DANCED (Danish Cooperation for Environment & Development) on the three year preparation of the Maliau Basin Conservation Area Management Plan.	60 Technical Assistance Reports were produced on numerous studies of the biota and broader ecology of MBCA.
6	2000	Intensive field surveys started as part of the preparation of the Maliau Basin Conservation Area Management Plan.	
7	2000	Research applications to MBCA were coordinated by the MBMC Secretariat in accordance to the Procedures & Guidelines for Conducting Research in MBCA.	
8	2000	Three automatic weather stations installed in MBCA. Two stations are located inside the basin, one at the Heath Forest near the Camel Trophy Hut (Nepenthes Research Station) and another at the top of Strike Ridge. The third station is located at the Belian camping ground near the Maliau Basin Studies Centre.	Baseline data for climate.
9	2001	First major expedition to Lake Linumunsut in the northern part of Maliau Basin Conservation Area.	The scientific expedition to explore on geology, hydrology, biodiversity, forestry and mapping.
10	2002	Collaboration with Harvard University Herbaria, USA (HUH)	Collaboration in the collection, study & conservation of the Maliau Flora.
11	2005	Scientific Expedition by UMS, JICA and YS to area around Ginseng Camp, Lobah Camp, Camel Trophy Camp, Maliau Falls and Agathis Camp.	To document and to prepare the checklist of biodiversity for MBCA.
12	2006	Academy of Science Malaysia & YS Scientific Expedition at Eucalyptus Camp near the northern rim of MBCA.	The exploration of northwestern section, near the rim. About 50 scientist explored flora, fauna, physical and landscape diversity as well as its water and aquatic life.
13	2011	Collaboration with Wildlife Research Centre, Kyoto University.	For research, education & training programme in Maliau Basin Studies Centre.
14	2011	Collaboration with State Government, Sime Darby Foundation and The Royal Society's South East Asia Rainforest Research Partnership (SEARRP)	The Stability of Altered Forest Ecosystem (SAFE) Project.
15	2013	First major Wildlife & Resources Survey to assess the wildlife resources in the core area and buffer zones (10th June-24th June 2013) organised in collaboration with Sabah Wildlife Department	To gather and update data for the revision of the strategic management plan.
16	2015	Collaboration with Nordic Rainforest Research Network.	Jointly endeavour to promote high quality scientific project specifically in MBCA.
17	2018	<i>Grouvellinus leonardodicaprio</i> was discovered during an expedition in Maliau Basin. The trip was organized by Taxon Expeditions, which sets up field surveys for budding citizen scientists.	A new species of water beetle has been named after actor and environmentalist Leonardo DiCaprio.

Several research activities are conducted at MBCA as following. The activities assisting in providing basic information for research purposes as well as description of the area health:

- Hydrology
  - Rainfall data from manual rain gauge from two locations (MBSC & MB Gate)
  - Automatic Weather Stations at Belian Camping Ground
  - Automatic Weather Stations at Nepenthes research Station
- Phenology Studies
  - Conducted in 3 plots in MBCA namely Agathis Research Station, Belian Camping Ground and MBCA Gate
  - Specific phenology study on ficus is being conducted at Belian Camping Ground. The data from this study being used to determine wildlife activities in relation to fruiting season.
- Bird Transect Project
  - To update the bird checklist data. MBCA is one of the Important Bird Area.
- Reptiles & Amphibians Data
  - To update the checklist for MBCA.

MBCA is a tremendously valuable botanical resource. Over 1,800 species of plants are found here, including 41 species mentioned in The International Union for Conservation (IUCN) of Nature's Red List of Threatened Species. 150 species of orchids, several of which are new records for Sabah including the striking necklace orchid *Coelogyne odoardi*, endemic to Borneo.

MBCA is home to 91 species of rare mammals such as Bornean Banteng, Bornean Clouded Leopard, Bornean Pygmy Elephant and Proboscis Monkey.

More than 278 species of birds include 20 Bornean endemic species namely Bulwer's Pheasant, Bornean Bristlehead, Blue-Headed Pitta, Black-Crowned Pitta and Bornean Banded Pitta recorded. It is also the home to more than 53 species of amphibians.

### 6.3 ENVIRONMENTAL EDUCATION PROGRAM (EEP)

The EE programme in MBCA is the complementary to the objective of Sabah Environmental Education Policy (SEEP). The implementation of the EE program in MBCA is guided by the policy as outlines in the CEMD Strategic Plan 2011-2020 and Sabah Environmental Education Policy (SEEP).

The EEP in MBCA is conducted by Sabah Nature Club (SNC) and MBCA. The budgets utilized for the programme are either from YS or IKEA Fund.

### 7. Hospitality and recreation

The ecosystems of the MBCA are knowledge resources that can be used to generate various kinds of sustainable benefit flows to Sabah, Malaysia and the world. Tourism will be used to harvest revenues from visitor eager to learn about rainforest ecosystem. In all cases, strong preference will be given to activities that involve minimal risk to the MBCA while yielding maximum benefits – including financial benefits – for conservation.

In response to National and State policies, recreational tourism at MBCA will be implemented in such a way as to enhance opportunities to increase visitor numbers, to create awareness on the importance of MBCA through Environmental Education Programme, to create employment among local communities from adjacent areas and optimise revenue; whilst at the same time maintain the wilderness character of MBCA and its tourism opportunities.

Based on the above figure, the trend of visitor arrival at MBCA is increasing. The accessibility to MBSC play an important role in visitor's arrivals. The paved access road from major town such as Kota Kinabalu & Tawau connecting the MBCA allows the visitor to arrive. MBCA also known as the jungle trekking destination. The COVID-19 pandemic affects the visitors arrival in year 2020 – 2021.

Table 5: EE activities at MBCA

Year	Date	Number of programs conducted	Number of participants	Name Of the EE Program	FUNDED BY
2004	22 – 26 Nov	1	12	Kursus Orientasi Alam Semulajadi (KOAS)	YS
2005	21 – 25 Nov	1	24	Kursus Orientasi Alam Semulajadi (KOAS)	YS
2006	05 – 09 Jun	1	25	Kursus Orientasi Alam Semulajadi (KOAS)	YS
	21 – 25 Aug	1	24	Kursus Orientasi Alam Semulajadi (KOAS)	YS
2007	22 – 24 Ap	1	34	Kursus Orientasi Alam Semulajadi (KOAS) (Perasmian Bangunan Shell Di Gate)– <b>Special Ee</b>	YS
	04 – 08 Jun	1	25	Kursus Orientasi Alam Semulajadi (KOAS)	YS
2010	21 – 26 Nov	1	23	Kursus Orientasi Alam Semulajadi (KOAS)	YS
2011	27 – 29 Jan	1	30	Kursus Orientasi Alam Semulajadi (KOAS) (Perasmian MBSC) – <b>Special Ee</b>	YS
2012	10 – 15 Nov	1	25	Kursus Orientasi Alam Semulajadi (KOAS)	YS
	05 – 12 Dec	1	22	Kursus Orientasi Alam Semulajadi (KOAS)	YS
2013	25 – 29 Mar	1	25	Kursus Orientasi Alam Semulajadi (KOAS)	YS
	25 – 29 Nov	1	22	Kursus Orientasi Alam Semulajadi (KOAS)	YS
2014	09 – 12 Jun	1	25	Program Pendidikan Alam Sekitar (Siri 1)	IKEA
	24 – 27 Nov	1	24	Program Pendidikan Alam Sekitar (Siri 2)	IKEA
	24 – 28 Nov	1	25	Kursus Orientasi Alam Semulajadi (KOAS)	YS
	1 – 4 Dec	1	22	Program Pendidikan Alam Sekitar (Siri 3)	IKEA
	8 – 11 Dec	1	19	Program Pendidikan Alam Sekitar (Siri 4)	IKEA
2015	16 – 19 Mar	1	23	Program Pendidikan Alam Sekitar (Siri 5)	IKEA
	11 – 14 Jun	1	24	Program Pendidikan Alam Sekitar (Siri 6)	IKEA
	30 Nov – 3 Dis	1	22	Program Pendidikan Alam Sekitar (Siri 7)	IKEA
2016	14 – 18 Mar	1	24	Kursus Orientasi Alam Semulajadi (KOAS)	YS
	28 Nov – 01 Dec	1	23	Program Pendidikan Alam Sekitar (Siri 8)	IKEA
	5 – 8 Dec	1	21	Program Pendidikan Alam Sekitar (Siri 9)	IKEA
	13 – 16 Dec	1	18	Program Pendidikan Alam Sekitar (Siri 10)	IKEA
2017	20 – 23 Mar	1	24	Program Pendidikan Alam Sekitar (Siri 11)	IKEA
	22 – 24 Sep	1	15	Program Pendidikan Alam Sekitar (Siri 12)	IKEA
	20 – 24 Nov	1	24	Kursus Orientasi Alam Semulajadi (KOAS)	YS
2018	19 – 22 Mar	1	24	Program Pendidikan Alam Sekitar (Siri 13)	IKEA
	20 – 23 Aug	1	23	Program Pendidikan Alam Sekitar (Siri 14)	IKEA
	19 – 23 Nov	1	23	Kursus Orientasi Alam Semulajadi (KOAS)	YS
	10 – 13 Dec	1	21	Program Pendidikan Alam Sekitar (Siri 15)	IKEA
2019	25 – 28 Mar	1	22	Program Pendidikan Alam Sekitar (Siri 16)	IKEA



	12 – 15 Aug	1	16	Program Pendidikan Alam Sekitar (Siri 17)	IKEA
	18 – 22 Nov	1	25	Kursus Orientasi Alam Semulajadi (KOAS)	YS
	25 – 28 Nov	1	10	Program Pendidikan Alam Sekitar (Siri 18)	IKEA
		35	788		



Figure 2: Total number of visitors recorded at MBCA.

The records kept in MBCA indicate that visitors are grouped into the following categories:

- Trekking;
- Maliau Basin Studies Centre (MBSC);
- Working – YS;
- Working – others; and
- Research, Look see & EEP, Volunteer

Records indicate that large numbers of visitors to MBSC were those categorised as on study tours, familiarisation visits, and those doing trekking inside the core area to view the landscape, waterfalls and flora/fauna.

Notable visitors to MBCA:

- HRH Prince Henrik of Denmark, 2001
- Former Chief Minister of Sabah (Tan Sri Musa Haji Aman), 2007
- The Sixth Prime Minister of Malaysia (Datuk Seri Najib Tun Razak), 2011
- The Fifth Prime Minister of Malaysia (Tun Abdullah Ahmad Badawi), 2014
- Celebrity Maya Karin, 2018
- Former Minister of Water, Land and Natural Resources, YB Dr Xavier Jayakumar, 2019
- Former Deputy Chief Minister of Sabah (Datuk Seri Panglima Wilfred Madius Tangau) 2019
-

## 8. Maintenance & Development

Almost all the proposed development and infrastructure plans have been implemented in MBSC. The maintenance of the facilities was carried out by the staff periodically. MBSC was completed and officiated in 2011. Among the facilities at MBSC are as following:

- i. MBSC gate (Reception building, staff house & security post)
- ii. Office, library, mini theatre & gift shop
- iii. Conference building
- iv. Laboratory
- v. Rest house- dining hall
- vi. Audio visual lounge & toilet
- vii. VVIP Chalet
- viii. Resthouse (Kapur & Keruing)
- ix. Hostel with dining hall & kitchen
- x. Environmental Education Complex (classroom & laboratory)
- xi. Maliau Nature gallery
- xii. 6 Bed researcher house
- xiii. Researcher's studio
- xiv. Semi-detached house
- xv. Terrace house
- xvi. Service building
- xvii. Genset building
- xviii. Sport field
- xix. Surau
- xx. Belian Camping ground
- xxi. Skybridge
- xxii. Observation tower
- xxiii. Suspension bridge



Figure 3: Aerial view of the Maliau Basin Studies Centre

Research stations & rangers camp in MBCA:

- a. Agathis
- b. Nepenthes
- c. Ginseng
- d. Lobah
- e. Rafflesia
- f. Seraya
- g. Eucalyptus
- h. Strike Ridge (Dacrydium)



Figure 4: Location of MBCA's Research Stations & Rangers Camp

## 7. COLLABORATION/FUNDING

---

MBCA have a well-known collaborator locally and international. The collaborations are for conservation, research, education, volunteer programme, training, physical development and formulation of management plan.

Table 6: MBCA Collaborators

No	Collaborators	Year	Remarks
1	WWF-Malaysia	1988	Training Programme. Facilities rental.
2	Universiti Malaysia Sabah	1996	Research programme. Scientific Expedition.
3	IKEA	1997	Funded of equipment, facilities development, wildlife & resource survey 2013 & EE programme
4	DANCED-DANIDA	1999	Preparation of the MBCA Strategic Management Plan.
5	NEPCon	1999	Technical assistance in the preparation of Strategic Management Plan.
6	SHELL	2002	To build the SHELL Maliau Basin Visitor Reception and Information Building.
7	Harvard University Herbaria, USA (HUH)	2002	Collaboration in the collection, study & conservation of the Maliau Flora. Increase knowledge and collections of the Maliau Flora and promote research by Harvard personnel at the Maliau Basin
8	Academy Science Malaysia (ASM)	2006	Research Programme. Eucalyptus scientific expedition.
9	Wildlife Research Centre, Kyoto University	2011	Research, Education and Training Programme in MBSC
10	SEARRP	2011	Research programme. The stability of altered Forest Ecosystem (SAFE) Project.
11	Aage V. Jensen Charity Foundation	2012	Funded in preparation of 2 <sup>nd</sup> Strategic Management Plan.
12	Nordic Rainforest Research Network (NRRN)	2015	Promote high quality scientific project specifically in MBCA.
13	Forest of The World	2015	Promote high quality volunteer project specifically in YS Forest Management Area particularly but not restricted to MBCA.
14	Sabah Environment Trust (SET)	2017	Patrolling (Enforcement & Monitoring) Initiative.
15	Ropeskills Rigging Sdn Bhd	2018	To design, build & commission span Towers Access Ladder for the Maliau Skybridge.
16	Raleigh Malaysia	2020	To jointly select, plan & implement any collaborative projects.

## 8. ACHIEVEMENT

---

- Documentaries on Maliau titled “The Lost World” and “Tarzan from Harboore” were broadcasted in Denmark, 2002.
- Sabah Environmental Award 2003 under the category: “Outstanding Environmental Project Award Winner 2003”.
- Reclassified from Class II Forest Reserve to Class I (Protection) Forest Reserve for the purpose of water catchment protection as well as its high conservation value. Gazetted by the Sabah State Assembly as a Class I Protection Forest Reserve and increased in size from 39,000 to 58,840 hectares to include the outer northern and eastern escarpments and Lake Linumunsut in 1997.
- Increase the area surroundings into I Class I (Protection) Forest Reserve, strengthen the MBCA Buffer Zones, year 2012 - 2015.
- Collaborated with DANCED (Danish Cooperation for Environment & Development) in preparation of the Maliau Basin Conservation Area Management Plan in 1999.
- Received fund from the IKEA, the multinational furniture company for research, education & training since 1997.
- Completed the development of MBSC for the purposes of research, training & education in 2011.
- Publication of the two (2) Strategic Management Plans for Maliau Basin Conservation Area (in year 2003 & 2013)
- Due to unique biophysical features of the area, Naming Rights of Waterfalls MBCA was discussed in 21<sup>st</sup> MBMC Meeting in 2017.
- Important Bird Area for criteria Globally threatened species, Restricted-range species & Biome-restricted species. Listed by BirdLife International, the largest international Partnership for nature conservation (2004).
- 16 Danish volunteers had successfully participated the first ever volunteer programme at MBCA since 2015 under the YS – Forest of the World collaboration.
- Porters & Guide Association established. Socio-economic impact to communities’ surroundings MBCA, year 2017.



## 9. WAY FORWARD

---

- Capacity building to enhance the skills for staff in order to gain knowledge as well as to deliver the task efficiently and manage the area efficiently.
- Information on MBCA's flora/fauna/ climate/hydrology/geomorphology is updated/refined. The proposal for resource and wildlife survey is submitted and shortlisted from National Conservation Trust Fund.
- The patrolling and monitoring activities will be enhanced for protection of the area. A lesson learnt from the DaMal initiative.
- New project with Sabah Environmental Trust in monitoring and protecting endangered wildlife. Hopefully, with this study, the understanding of habitats, behaviours, and threats to wildlife, especially Bornean Banteng and Bornean Pygmy Elephant, will increase and assist in providing further plans and strategies in conserving wildlife which is now the main natural treasure of Sabah
- The proposal to develop the Tourism Zones at MBCA. On-going discussion with SEDIA.
- MBCA is in the process of acquiring the accreditation on Global Sustainable Tourism Council (GSTC).
- Initiative to introduce the renewable energy resources at the studies centre and research stations. The objective is to minimise the cost on operate the studies centre as well as to raise awareness.
- In all cases, strong preference will be given to activities that involve minimal risk to the MBCA while yielding maximum benefits – including financial benefits – for conservation.

## 10. ACTIVITIES FOR 2021

---

### 10.1 ADMINISTRATION & FINANCE

- Hospitality and nature guiding skills training for rangers, guides and porters” was held at MBSC where 18 staff of MBCA were attend this training.
- Refresher Course on Wilderness First Responder Course was held at MBSC with 30 staff were involve are from MBCA & ICCA.

### 10.2 MAINTENANCE & DEVELOPMENT

- Maintenance of the facilities at MBCA (Security gate, Studies Centre & Research Stations).
- Preparation on development of the renewable energy resources (micro-hydro) at selected research stations.

### 10.3 CONSERVATION & RESEARCH

- Patrolling for protection of MBCA conducted at MBCA (56 times annually)
- The signing of Memorandum of Understanding Between YS and Sabah Environmental Trust for five – year study on threaten species at Danum Valley, Maliau Basin and Imbak Canyon
- Routine research activities
  - Phenology studies
  - Hydrology
  - Wildlife Transect Project
  - Bird Transect Project
  - Reptile and Amphibians Data
- EE Programme- Train-the-Trainers” was held at the Danum Valley Study Centre (DVSC) where 4 of MBCA staff attend the program.

### 10.4 HOSPITALITY & RECREATION

- 1,458 visitors recorded at MBCA in year 2021. Achieved almost 60% of the Key Performance Index (2,500 visitors arrival annually).
- Tourism SWOT Analysis Workshop was conducted to enhanced the tourism potential and opportunities at MBCA.
- Ongoing process on GSTC accreditation.

## 11. HIGHLIGHTS ACTIVITIES IN 2021 IN PICTURES

---



Figure 11.1 Final report and presentation from industrial training student.



Figure 11.2 Site visit by C&EMD Group Manager on the Agathis new reception building site





Figure 11.3 Bearded pig carcass search operation by Maliau rangers and Wildlife Rescue Unit.



Figure 11.4 Wildlife Rescue Unit obtaining tissue samples from dead bearded pig in MBCA.



Figure 11.5. Day-trip visit by former vice Minister of Tourism Sabah, Datuk Pang and his colleagues.





Figure 11. 6 Visit by the Head of Sabah Crime Prevention and Community Safety Department (JPJKK), Senior Assistant Commissioner (SAC) Datuk Ahmed Fadzillah Mohamed



Figure 11.7 Operational Permit survey by Forest Resource Management Unit, SFD and Maliau staff.





Figure 11.8 Wildlife Rescue Unit came to Maliau after a report has been sent regarding a weak sambar deer found in a drain on the way to the studies centre. The deer was brought to Lok Kawi Zoo for post mortem.



Figure 11.9 Maliau staff and interns took part in tree planting campaign – Kempen Penanaman 100 Juta Pokok- which is organised by Malaysian Ministry of Energy and Natural Resources



Figure 11.10 DaMal patrol team using ATV during their patrol in the Megawakid logging camp.



Figure 11.11 Ops Bersepadu Khazanah (OBK) team releasing 'white-crowned shama' in KM9, Maliau Basin road.





Figure 12.12 Camera trap installation for Banteng and Elephant survey



Figure 11.13 Courtesy visit by the new Head of Sabah Wildlife Department, Tawau District, Mr. Primus Lambut



Figure 12.14 River patrol by DaMal patrol team and SFD Protect Team at Kuamut River.



Figure 11.15 Day visit to Maliau Basin Studies Centre by Sabah Park staff.



Figure 11.16 Briefing and discussion between Raleigh Sabah Society and Maliau officer regarding their volunteerism project in MBCA.





Figure 11.17 Field work and visit from Sabah Environmental Trust staff and interns.



Figure 11.18 Hospitality and Nature Guiding Skill Training



Figure 12.19 Camera trap installation and artificial salt lick establishment under the survey of 'Globally Threatened Species in DaMal Rainforest Complex.



Figure 11.20 : Audit inventory 1-3/12/2021





Figure 11.21: Refresher Course on Wilderness Emergency First Responder For C&EMD Staff.

# APPENDIX

## APPENDIX 1.0

List of Maliau Basin Conservation Area staff:

No	Name of Staff	Post/ Designation Status	Unit/Position
1	Robinson Rozali Rustin	Officer In Charge	Senior Officer
	<b>Maintenance &amp; Development</b>		
2	Vacant	M & D Officer (Permanent)	Head of Unit
3	Ranggau Suffian	Senior Forest Ranger (Permanent)	Assistant Head Unit
4	Baladius Baindang	Forest Ranger (Permanent)	Assistant Head Unit (Maliau Gate)
5	Rajinus Musilin	Forest Ranger (Permanent)	Heavy machinery
6	Sajirus Rimin @ Wasimin	Carpenter (Permanent)	Carpentry
7	Dionysius Fedilis	Forest Ranger (Permanent)	Enforcement
8	Mohd Fardee Simin	Storekeeper/ Mechanic (Permanent)	Workshop
9	Ahmad Shahirudin Lius	Assistant Engine Driver (Permanent)	Electricity
10	Gilbert Kamino	Junior Forest Ranger (DPW)	General
11	Julian Paul	Plumber (DPW)	Water supply
12	Petrus Siliwong	Asst Mechanic (DPW)	Workshop
13	Romuld Taili	Assistant Engine Driver (DPW)	Electricity
14	Jolin Ampasok	Junior Forest Ranger (DPW)	Carpentry
15	Phines Isten Jaipin	Junior Forest Ranger (DPW)	General
16	Rohid Kaloh	Junior Forest Ranger (DPW)	General
	<b>Hospitality &amp; Recreation</b>		
17	Jarizul Mohd Marmoh	H & R Officer (Permanent)	Head of Unit
18	Mohd. Rafi Bunggau	Forest Ranger (Permanent)	Housekeeping
19	Nor Atikah Muhajir Shah	Cook (Permanent)	Kitchen
20	Jefrey Layongan	Cook (Permanent)	Kitchen
21	Zuliaty Tayat	Asst. Cook (Permanent)	Kitchen
22	Mius Nambalek	Junior Forest Ranger (DPW)	Reception
23	Mohd Azree Upili	Forest Ranger (Permanent)	Recreation
24	Noriani Riman	Asst Kitchen (DPW)	Kitchen
25	Rina Rasid	Janitor (DPW)	Kitchen
26	Salinah Adek	Cook (DPW)	Kitchen
27	Maini Ginsu	Janitor (DPW)	Housekeeping
28	Leonora Teresa Lawrence	Junior Forest Ranger (DPW)	Housekeeping
29	Rizuan Ampasok	Janitor (DPW)	Housekeeping
30	Sufizah Jinius	Receptionist (DPW)	Reception
31	Olivy Anne James Kawanding	Receptionist (DPW)	Reception
32	David Bin Paul	Junior Forest Ranger (DPW)	Recreation
33	Rabaatul Nor Haslinda Binti Saumin	Receptionist (Permanent)	Reception
34	Mohd Izzul Hafiz Junairin	Junior Forest Ranger (DPW)	Recreation
	<b>Research &amp; Conservation</b>		
35	Grace Pounsing	R & C Officer (Permanent)	Head of Unit
36	Thomas Roling	Senior Forest Ranger (Permanent)	Assistant Head of Unit
37	Erwan Abd. Razlie	Forest Ranger (Permanent)	Fauna
38	Hardy Mangkawasa	Forest Ranger (Permanent)	Physical Science
39	Jeffry Battin	Forest Ranger (Permanent)	Flora

40	Masliadi Asri	Junior Forest Ranger(DPW)	Fauna
41	Mel Aderian Marinus	Junior Forest Ranger (DPW)	Enforcement
42	Yunita Ranggau	Junior Forest Ranger (DPW)	Database
43	Ali Allbanah Bin Anchun	Junior Forest Renjer (DPW)	Nursery
	<b>Administration &amp; Finance</b>		
44	Julailah Jiman	A & F Officer (permanent)	Head of Unit
45	Norliah Rahidin	Senior Clerk (Permanent)	Maliau Keningau
46	Hayati Sufian	Account clerk (Permanent)	Administration and Finance
47	Abel Gintod	Driver (Permanent)	Logistic
48	Baraim Ahurun	General Clerk (Permanent)	Logistic
49	Rosnita Wasinin	Shopkeeper (DPW)	Shop
50	Mohd Suhairyryansah Reynold	Admin Clerk (DPW)	Administration and Finance
51	Arning Indok	Junior Forest Ranger (DPW)	Logistic
52	Stephenie Gunsalam Dimok	Junior Forest Ranger (DPW)	Administration, Shop and Osh
53	Bil Maaruf Mohamad	Forest Ranger (Permanent)	Storekeeper

HOME Wednesday April 7, 2010

## Lost World of Maliau as next World Heritage Site in Sabah

by KAMARUDDIN LIUSIN  
kmaruddin@newsabah-  
mes.com.my

OTA KINABALU: Maliau Basin will be nominated as the second World Heritage Site in Sabah, said tourism, Culture and Environment Minister, Dato Masidi Marjan.

He said the cabinet has given the go-ahead on his ministry's proposal for the nomination.

Kinabalu Park was declared one of the 12 World Heritage Sites by UNESCO on Dec 2, 2000.

Masidi said from an earlier discussion, it was proposed that Danum Valley be nominated together with Maliau Basin. However, the ministry has not decided whether to agree with the proposed joint nomination.

"The proposal on Danum Valley still being discussed by (our) officers on whether to have a joint nomination," he said after officiating at Mount Tambuyukon Scientific Seminar here yesterday.

He said the government's decision to nominate Maliau Basin only proves that it has no interest to disturb the area.

"A lot of parties are worried and some have even claimed that the coal plant in Lahad Duta is just an excuse to extract coal (from the area)," he added.

He noted that the area possesses a unique natural heritage that cannot be found anywhere else in the world.

On another matter, Masidi proposed a two-in-one promotional climbing package between Mount Kinabalu and Mount Tambuyukon. He said climbers can ascend Tambuyukon first before Kinabalu to

He noted that climbing of Mount Kinabalu has become more a recreational activity than a physical challenge.

The 2,580m Tambuyukon can offer the alternative for adventure



LETTER OF INTENT: Sabah Parks director Paul Basintal (third left) exchanging the letter of intent with UKM Dean of Science and Technology Faculty Prof Musa Ahmad witnessed by Masidi during the seminar. - Photo By Eddie Angat

Star2U Express Friday, June 28, 2013

## 134 researchers join in Maliau wildlife survey

KOTA KINABALU: A total of 134 researchers from all over Sabah and as far as the United Kingdom came to the Maliau Basin Conservation Area (MBCA) to participate in the Maliau Wildlife Survey 2013 held from June 10 to 24.

The survey, jointly organised by Yayasan Sabah Group (YSG) and the Sabah Wildlife Department, was to estimate wildlife species diversity and richness in greater MBCA area and also to assess prospects for tourism development and forest rehabilitation on the Commercial Forest Reserves outside MBCA.

Two methods were used to carry out the survey, mist netting and camera trapping with the latter more superior in observing wildlife in 24 hours period.

"For this survey, cameras were placed in new areas that have never been exposed to camera trap before. I am hoping to see Borneo Cat during this survey, as Borneo Cat exists in Tabin and Deramakot," said Institute for Tropical Biology and Conservation UMS lecturer Dr Henry Bernard.

According to Bernard, to date, not many research publications have been carried out in MBCA as compared to Danum Valley Conservation Area but he believes that if Maliau is promoted properly, it will become like what Danum Valley is.

"I think over the next ten days of the survey, I'm really going to be happy with anything we find," said another participant, Kelly Aghams from the United Kingdom who was also interviewed prior to the survey.

"This is my first opportunity here. It is my first experience and we have already seen amazing sighting. We saw gibbon this morning when we entered Maliau Basin and we saw otter and bush pig yesterday," she added.

Sharing her excitement was her younger sister Nicola Aghams, a PhD student currently attached with the Sabah Wildlife Department.

"I really hope we can see wildlife sighting especially species I have never seen before. I'm expecting to find various species of birds and larger mammals as the habitats here are more pristine," she said.

She also praised YSG's effort in carrying out conservation efforts in Maliau Basin. She hopes YSG will continue the good work in conservation area here and elsewhere.

"Conservation effort in Maliau Basin is very important because Maliau is such an important ecosystem not just for Sabah but also for the world," stressed Nicola.

Participants of the survey came from various organisations such as Wildlife Department, Sabah Parks, UMS, World Wide Fund for Nature (WWF)-Malaysia and Institute for Development Studies (Sabah).

During the ten-day survey, participants were divided into twelve groups, each responsible to cover designated area. The respective groups will be presenting their survey findings in a forum later.

Maliau's unusual forest types include rare montane heath forest and a distinct and diverse flora with over 1,800 species of plant identified to date. Along with surrounding forests, it is home to rare mammals such as the Banteng, Clouded Leopard and Malayan Sunbear and more than 290 species of bird.



An unidentified insect found in the MBCA



Nicola Dr Bernard Kelly

## Over 684,824ha converted for conservation: Dept

From Page One

Also he said a portion of the logged-over areas of BW, be allowed for oil palm plantation for (30) years as an alternative income and short term crop for the YS Group but most of its forests were to be taken back for conservation and restoration.

The planting of an alternative crop in BW's area be allowed as it is permitted under a unique condition, Clause 96, subject to the direction of the Chief Conservator of Forests. This was written into the BW agreement of 1963, said Sam. He also said the Forestry Department decided that the areas for oil palm should remain as forest reserve on the basis that the department shall impose a 5 per cent royalty on FFB sales, not on alienated lands and the income can be partly used to finance conservation.

Also, the reversibility of conversion as the oil palm land use could be reverted in the future, and usage is for (30) years or no more than (2) rotations; strict controls to be imposed on land use and its development under forest reserves and that the YS Group's dependence on timber revenue to be phased out drastically and must bring down its timber production to a sustainable level while upgrade its forest rehabilitation and tree planting efforts with high-value species.

"It must be borne in mind that the original area of the Yayasan concession was only 3,300 square miles - 84,700ha. The Borneo government earmarked some additional areas in 1914 to be added making it up to about 1.05 million ha but the process was not completed at the time.

"The current State Government then commenced its reform agenda in earnest, starting in 2004 and this has been accelerated over the years, since then.

"Today, the BW licence is only 525,261,998ha, from 306,310ha, about 50 per cent taken back for conservation whereas the YS mother concession is 811,846ha, the bulk of which, was also taken out for conservation. In total, BW and YS now have a total area of approximately 368,948,75ha today," he pointed out.

Sam further noted that over 684,824.75ha (68pc) of YS concession or 80pc of its 1970 concession area, has been converted for TPAs or conservation.

"If the earlier areas annexed for conservation over the years are taken into account - Telan Wildlife Reserve, Kulamba Forest Reserve, Silabakan Forest Reserve, Gunung Tinker Forest Reserve, etc. of some 200,000 ha, Yayasan Sabah would have sacrificed not less than 884,000ha for total protection, since the 1980s. The 884,000 ha are bigger than the original 3,300 square miles Licence Agreement due to additions over the years. "The best of Yayasan's and Borneo's forests (Danum, Imbak and Maliau) are now in protected status. With this level of unmatched sacrifices, YS must find an alternative income to make up for the loss and, thus, the BW option with oil palm," said Sam.

However, he said, to allow the planting of an agro-forestry crop in a forest reserve may be a controversial land use. But the benefits derived from the conservation point of view, have so far been spectacular due to pragmatism and win-win solutions. Unlike other oil palm developers, BW keeps sensitive areas conserved such as riverines, slopes and so on.

"The BW development is in a class of its own of a much higher environmental standard."

He also noted that in Sabah's pursuit toward reaching its TPA target, areas of the best forests are the priority with YS providing the quantity and quality required. "Consequently, nearly 900,000ha of forests originally under the YS concession have been turned into TPAs, under Class I protection Forest Reserve, with the strategy implemented in earnest and accelerated since 2004. This is an unmatched record," he said.

The TPAs now stand at over 1.85 million ha half of which have been contributed by the YS Group, he added. Due to environmental restrictions, it is envisaged that not more than 600,000ha will be developed and the balance of 50,000ha or so, returned for conservation to the government.

With approximately over 50,000ha already devel-

oped of various maturing ages, it will probably take another 5 years to complete the development.

Upon completion, YS need not harvest forest anymore to support its socio-economic development programmes. But it will be paying more oil palm taxes to the government than other developers due to the 5 per cent royalties on FFB (Fresh Fruit Bunches). In 2010, the government of Sabah received not less than RM40m in CPO sales tax and FFB (Fresh Fruit Bunches) forest royalty. In the next (5) years, this will increase to RM100m, a sum adequate to run the Forestry Department and to continue conservation programmes.

The development at BW is subject to independent third party auditing to ensure compliance. It has also been made mandatory for BW to be RSPO certified by 2025, a policy set by the State Government in 2015, so Sabah CPO can enter all international markets and compete on the basis of environmental governance and its premium label.

For transparency, good governance and the implementation of the best sciences, the world renowned Royal Society, in 2011 signed an agreement with the YS Group and FD to launch the world's largest ecological project called "Safe" in the BW area, based on oil palm, and financed both by Sime Darby and the Royal Society, London.

This will set regimes and standards of world reputation and leadership. In April 2011, the Royal Society also expanded its science based research the possibility of creating new TPAs, the BW areas, being one of the areas to be assessed.

"The BW area will represent an eventual forest loss of 2.5 per cent for Sabah. But this 2.5 per cent will promote the creation of 30 per cent TPAs or more, and reduce drastically over dependence on timber, and support conservation/forest restoration.

"At the same time, the BW project has avoided the stark possibility of logging at an unsustainable manner and leaving the aftermath as wastelands, with the promise of a failed industrial project of dubious success, as an afterthought," said Sam.

NEW SABAH TIMES  
(Thursday, 11<sup>th</sup> July 2013)

## NEPCon-YS tie-up brings greater public awareness on Maliau Basin

KOTA KINABALU: NEPCon's tie-up with the Sabah Foundation in managing the Maliau Basin Conservation Area (MBCA) has brought greater national and global awareness on protecting the pristine forest, also known as Sabah's "Lost World".

NEPCon executive director Peter Feilberg said public awareness of the MBCA both in Malaysia and internationally had increased significantly during the first MBCA Management Plan.

"This is the very reason why the project (MBCA Management Plan) is still under NEPCon's attention. I am very impressed with the openness, transparency and the mutual respect that we have seen here. It's easy to work with Yayasan Sabah (Sabah Foundation) and I feel we share the same interest."

"I have been working with many organisations in many parts of the world, so that is really something exceptional for Sabah," he told Borneo at the signing of a memorandum of understanding (MOU) between Sabah Foundation and NEPCon, a consulting firm, on the revision of the MBCA Management Plan, here, this week.

Asked whether the Danish taxpayers' contribution to the MBCA project was justified, Feilberg said: "No doubt about it. The Maliau Basin project is one of the best ways that the Danish taxpayers' money has been spent within the region."

Globally, there are developments and environmental projects that have been

paid by Danish taxpayers. "It's very clear that the Maliau Basin sanctuary is still well protected. The main area is being funded, like the preparation of the (MBCA) management plan where significant parameters have been implemented," he said.

Feilberg said during the first MBCA Management Plan, NEPCon was doing some (media) communication (in Danish) and they (Danish community) liked it. "The Danish national television even made two half-hour films on the Maliau Basin. In 1999, a joint project was initiated between the Sabah Foundation and Danish Cooperation for Environment and Development (DANCED) and Danish International Development Assistance (DANIDA).

It was a four-year collaborative project that resulted in the formulation of the first strategic management plan for MBCA. Also established through the YS-DANCED/DANIDA project was the Maliau Basin Studies Centre (MBSC) at the southeast edge of the basin, for research, conservation, education and eco-tourism purposes.

NEPCon was one of the consulting firms appointed under the YS-DANCED/DANIDA project to provide technical advice.

The MBSC, located in the MBCA which covers about 58,840 hectares, was launched by Prime Minister Datuk Seri Najib Razak on Jan 29, 2011. —Borneo



A waterfall in Maliau Basin



city k

The Borneo Post  
June 13, 2015 (Saturday)  
MoU MBMC and NRRN - IKEA

# Maliau Basin to be field research, training centre

By Amy Dangin

**ROTA KINABALU:** Yayasan Sabah yesterday set yet another important milestone for Maliau Basin as it signed two memorandums of understanding (MoU) with the Maliau Basin Management Committee (MBMC) and Nordic Rainforest Research Network (NRRN), as well as with the Forests of the World, an agreement that will see the establishment of the much-awaited Maliau Basin Rainforest Research and Training Programme.

Director of Yayasan Sabah, Datuk Sapawi Ahmad in his speech read by Datuk Sam Mannan, board member of Yayasan Sabah Board of Trustees said the programme, proposed by the Maliau Basin Management Committee of which Yayasan Sabah is a principal member, will use Maliau Basin as the focal field research and training centre.

It will also be beneficial in terms of promoting interest among the Nordic Research Community to carry out research at Maliau Basin, he added.

"I have no doubt that this programme will be as successful as the Danum Valley Rainforest Research, Education and Training programme, which was implemented in partnership between the Danum Valley Management Committee of which Yayasan Sabah is a member, and the Royal Society, United Kingdom Southeast Asia Rainforest Research Programme," he said at the signing ceremony, here yesterday.

Witnessing the signing

ceremony, Minister of Tourism, Culture and Environment Datuk Seri Panglima Masidi Manjun commended the effort which is in tandem with the national agenda of the state's continuous emphasis on its environmental protection and the conservation of its biodiversity.

"While we are unwavering in our resolve to make Sabah a developed and prosperous state, this will be implemented with regard for environmental consequences. The main causes for the loss of biodiversity in Malaysia and elsewhere are habitat destruction, over-harvesting and pollution.

"To counter this problem, the government has drawn up a national policy on biological diversity, which promoted

maintaining plants and animals in their original habitats and beyond their original habitats in facilities such as botanical gardens," said Masidi.

"The purpose is to ensure long-term food security and preservation of the unique biological heritage of Malaysia. I support the establishment of the Maliau Basin Rainforest Research and Training Programme as one of the outcomes of the collaboration."

The programme, he said, would go the extra mile to provide significant contribution to the state's effort to strengthen its scientific activities and in the long term would create the next generation of highly capable researchers.



Masidi (fourth left) and the signatories after the signing ceremony.

Yesterday's signing ceremony also saw the signing of an MoU between Yayasan Sabah and Forests of the World on promotion of volunteer programme, as well as between Yayasan Sabah and IKEA on Phase 4 of the INIKEA Project.

IKEA is Yayasan Sabah's biggest sponsor of its conservation programmes in Maliau Basin Conservation Area as well as the INIKEA Forest Rehabilitation Project initiated in 1996.

The Nordic countries, said Sapawi, through the Danish Cooperation for Environment and Development (DANCED) and later Danish International Development

Agency (DANIDA), NEPCo and IKEA, have been part and parcel of the development of the Maliau Basin Conservation Area since its early beginning, namely to formulate Maliau Basin's first management plan and to establish the Maliau Basin Studies Centre and related infrastructures and facilities.

The collaboration with Forests of the World will allow for a more structured programme that will provide opportunities for volunteers from the Scandinavian countries.

NRRN's members include notable universities from Nordic countries such as Copenhagen

University of Denmark, University of Oslo, Norway, Swedish University of Agricultural Science (SLU), Umea University, Sweden, Copenhagen Zoo, and Finland University, Finland.

"I am confident that these collaborations, especially with Forests of the World, can act as a springboard for others in Sweden, Denmark, Norway and other Nordic countries to visit Sabah.

"Malaysia in general and Sabah in particular are thankful and appreciative of the very crucial contribution that the Nordic countries, Denmark and Sweden, have given to Sabah," said Masidi, ending his speech.



## REFERENCES

---

- ASM (Academy of Sciences Malaysia) (2008). *Eucalyptus Camp Memories: An Expedition to the Maliau basin, Sabah*. Kuala Lumpur: Academy of Sciences Malaysia.
- Freitag, Hendrik & Pangantihon, Clister & Njunjić, Iva. (2018). Three new species of *Grouvellinus Champion*, 1923 from Maliau Basin, Sabah, Borneo, discovered by citizen scientists during the first Taxon Expedition (Insecta, Coleoptera, Elmidae). ZooKeys.
- GoS (Government of Sabah) (1998). "Forest (Maliau Basin Conservation Area) Rules 1998". *Warta Kerajaan Tambahan Kedua*. **Jil. LIII, No. S1** (pp. 4-7). Dated 2nd April, 1998. Kota Kinabalu: Jabatan Cetak Kerajaan.
- GoS (Government of Sabah) (2012). "Forest (Maliau Basin Conservation Area) (Amendment) Rules 2012". *Warta Kerajaan Tambahan Kedua*. **Jil. LXVII, No. S4** (pp. 27-28). Dated 22nd November, 2012. Kota Kinabalu: Jabatan Cetak Kerajaan.
- GoS (Government of Sabah) (2016). "Forest (Maliau Basin Conservation Area) (Amendment) Rules 2016". *Warta Kerajaan Tambahan Kedua*. **Jil. LXXI, No. S16** (pp. 264-266). Dated 3rd May, 2016. Kota Kinabalu: Jabatan Cetak Kerajaan.
- Hazebroek, H.P., Adlin, T.Z. and Sinun, W. (2004). *Maliau Basin: Sabah's Lost World*. Kota Kinabalu: Natural History Publication (Borneo) Sdn. Bhd.
- Marsh, C.W. (ed.) (1989). *Expedition to Maliau Basin, Sabah, April-May 1988, Final Report*. Kota Kinabalu: Yayasan Sabah and World Wide Fund for Nature Malaysia.
- Sabah Forestry Department (2020). Factsheets of Forest Reserves in Sabah. 2020. Sandakan. Sabah Forestry Department.
- Wong, A. and Guntavid, J.P. (2000). *Socio-economic Study on Local Communities of Tongod District, Surrounding the Maliau Basin Conservation Area*. Technical Assistant Report No. 9, Management of Maliau Basin Conservation Area Project. Kota Kinabalu: Yayasan Sabah-DANCED.
- Yayasan Sabah (2003). *Maliau Basin Conservation Area, Sabah: Strategic Management Plan 2003-2012*. Kota Kinabalu: Yayasan Sabah.
- Yayasan Sabah (2014). *Maliau Basin Conservation Area: Strategic Management Plan 2014-2023*. Kota Kinabalu, Sabah: Yayasan Sabah.